



BASE CAMPS

COMPLETE CAMP PACKAGE

- Generators - 25 KW to 2 Megawatts
- Air Conditioning and Heating
- Tents & Living Quarters
- Full Service Catering
- Refrigerated Storage
- Fuel Storage Tanks - 200 to 20,000 Gallons
- Sewer Storage Tanks - Up to 22,000 Gallons
- Roll Off Container Waste (20-40 Cubic Yards)
- Disposal of Roll-Off Container Waste
- Hand-Wash Stations
- Sewage Disposal
- Port-o-Lets
- Shower Trailers
- Portable Waste Treatment Units
- Bathroom Trailers
- Sewage Holding Tanks as well as Direct
- Sewer System Feeds where Available
- Temporary Sewage Systems - Sewage Pumps, Sewer Lines
- Temporary Water Systems - City Water Tie In, Water Lines, Water Outlet, Manifolds, Water Hook-Ups
- Secure Office Space - 8'x20' & 8'x40' Steel Office Buildings
- Emergency Fuel Delivery and Storage
- Base Camp Management
- Emergency Road Replacement / Temporary Roads
- Spill Containment
- Industrial Pressure Washers & Steam cleaners

TIGER INDUSTRIAL RENTALS

24 hour dispatch 1-888-866-0047 | International 001-409-832-9336 | www.TigerIndustrialRentals.com
LOCATIONS: BEAUMONT, TX | SULPHUR, LA | LAPORTE, TX | VICTORIA, TX | DILLEY, TX | MIDLAND, TX | SPRINGER, OK

BASE CAMPS



TIGER INDUSTRIAL RENTALS

24 hour dispatch 1-888-866-0047 | International 001-409-832-9336 | www.TigerIndustrialRentals.com
LOCATIONS: BEAUMONT, TX | SULPHUR, LA | LAPORTE, TX | VICTORIA, TX | DILLEY, TX | MIDLAND, TX | SPRINGER, OK

FOOD SERVICES



TIGER INDUSTRIAL RENTALS
24 hour dispatch 1-888-866-0047 | International 001-409-832-9336 | www.TigerIndustrialRentals.com
LOCATIONS: BEAUMONT, TX | SULPHUR, LA | LAPORTE, TX | VICTORIA, TX | DILLEY, TX | MIDLAND, TX | SPRINGER, OK

STORAGE



TIGER INDUSTRIAL RENTALS

24 hour dispatch 1-888-866-0047 | International 001-409-832-9336 | www.TigerIndustrialRentals.com
LOCATIONS: BEAUMONT, TX | SULPHUR, LA | LAPORTE, TX | VICTORIA, TX | DILLEY, TX | MIDLAND, TX | SPRINGER, OK

EATING & SLEEPING QUARTERS



OFFICE



TIGER INDUSTRIAL RENTALS

24 hour dispatch 1-888-866-0047 | International 001-409-832-9336 | www.TigerIndustrialRentals.com
LOCATIONS: BEAUMONT, TX | SULPHUR, LA | LAPORTE, TX | VICTORIA, TX | DILLEY, TX | MIDLAND, TX | SPRINGER, OK

SHOWERS, RESTROOMS AND SINKS



TIGER INDUSTRIAL RENTALS

24 hour dispatch 1-888-866-0047 | International 001-409-832-9336 | www.TigerIndustrialRentals.com
LOCATIONS: BEAUMONT, TX | SULPHUR, LA | LAPORTE, TX | VICTORIA, TX | DILLEY, TX | MIDLAND, TX | SPRINGER, OK

MEDICAL CENTER



TIGER INDUSTRIAL RENTALS

24 hour dispatch 1-888-866-0047 | International 001-409-832-9336 | www.TigerIndustrialRentals.com
LOCATIONS: BEAUMONT, TX | SULPHUR, LA | LAPORTE, TX | VICTORIA, TX | DILLEY, TX | MIDLAND, TX | SPRINGER, OK

SECURITY, LIGHTS, POWER, TANKS



TIGER INDUSTRIAL RENTALS

24 hour dispatch 1-888-866-0047 | International 001-409-832-9336 | www.TigerIndustrialRentals.com
LOCATIONS: BEAUMONT, TX | SULPHUR, LA | LAPORTE, TX | VICTORIA, TX | DILLEY, TX | MIDLAND, TX | SPRINGER, OK

TURNAROUND TENTS

SIZES

- 20' x 20'
- 20' x 30'
- 30' x 50'
- 40' x 60'
- 60' x 100'



2 & 3 YARD TILT HOPPERS

SPECIFICATIONS

- Length - 70.5"
- Width - 63.5"
- Height - 61"
- Gross Weight - 10,000 LBS
- Tear Weight - 1,542 LBS
- Max Cap - 3 CU YD



20"/24" COPPUS FAN AIR MOVER

SPECIFICATIONS

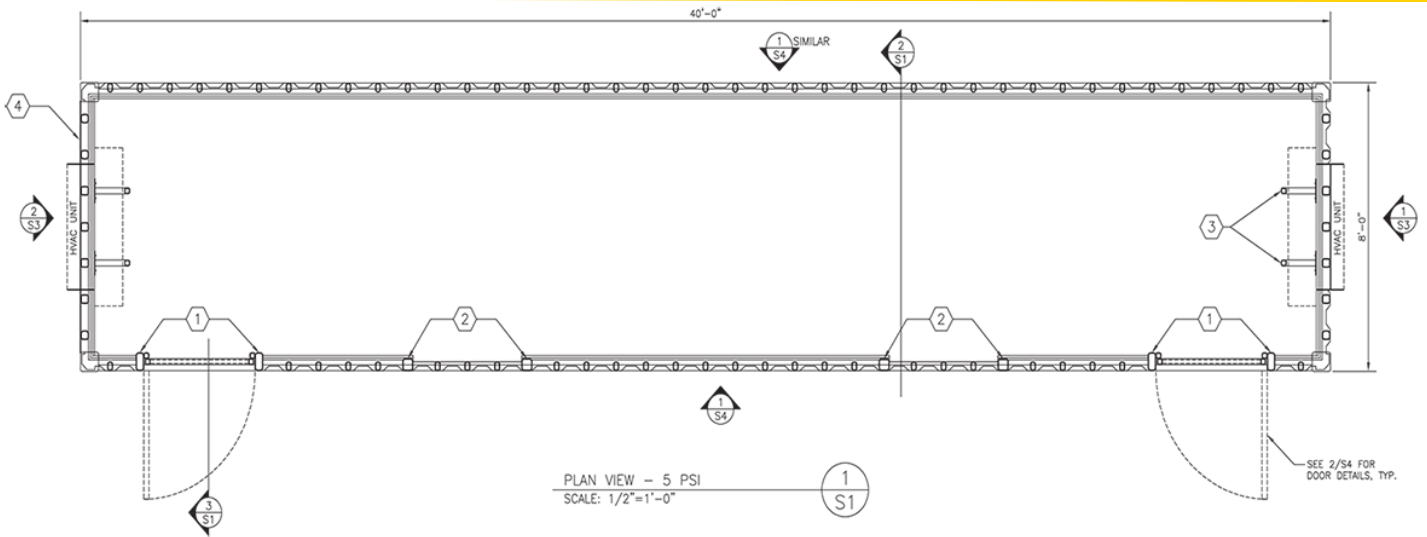
- Width - 20" / 24"
- Height - 10"
- Weight - 50 LBS
- Air Inlet - 3/4 Crowfoot
- CFM - 1100



OPTIONAL ACCESSORIES

- 3/4 RED Air Hose
- 20" x 25' Duct Hose

TIGER INDUSTRIAL RENTALS



8' X 40' SAFETY COOL-DOWN BUILDING

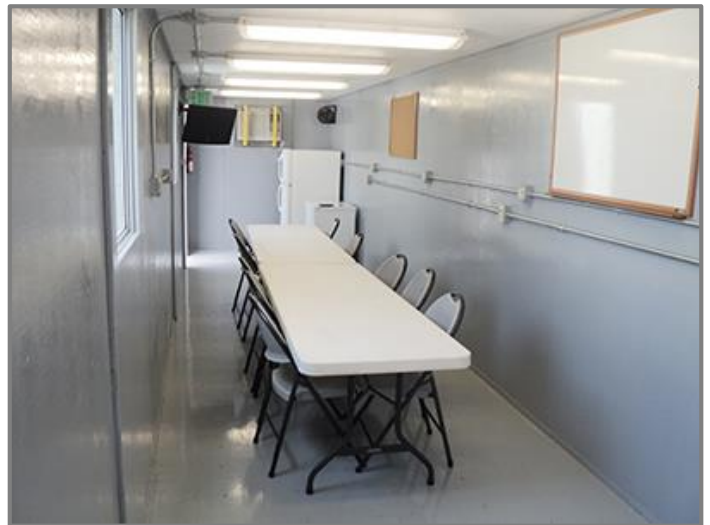
SPECIFICATIONS

- W x L x H - 8' x 40' x 8'6"
- Weight - 20,000 LBS
- (4) Lifting Lugs
- (2) HVAC - 18,000 Btu Units, Non-Classified Electrical
- Insulated
- (1) 240 V, 100 A, Single Phase, Non-Classified Electrical
- (2) Blast Rated Doors
- (2) Blast Rated Windows
- (6) 4' Long Dual Bulb Fluorescent Lights
- (6) Duplex Electrical Outlets
- (3) Data Ports
- (3) Phone Ports
- (1) Fire Extinguisher
- (2) Emergency Exit Lights
- Interior Wall Covering - 3/4" Industrial Grade Plywood
- Heavy Industrial Rubberized Tile Floors
- Exterior Paint - Direct to Metal, Rust Inhibiting, High Solids Urethane (Steel Grit Blast Prep)
- (2) Smoke Detectors
- Cables and Plugs*
- Certified Lifting Sling*

OPTIONAL UPGRADE OPTIONS

- Tool/Material Racks and Cabinets
- Wireless/Radio Signal Amplifier

* Upstream and Midstream applications only



4,000 WATT PORTABLE LIGHT TOWER

SPECIFICATIONS

Trailer Mount:

- Length - 173"
- Width - 50"
- Height - 70"
- Max Height - 32'
- Weight - 1,644 LBS
- Fuel Cap. 30 GAL
- Run Time - 48 HR
- Lumens - 440,000
- 2" Ball Hitch
- Light Coverage 5-7 Acres
- Sound Level 66 DB



528 GALLON DOUBLE WALL FUEL TANK

SPECIFICATIONS

- 87" x 46" x 52"
 - 110% Secondary Containment
 - Internal Baffles
 - 1,825 Empty / 5,574 Full
 - Secure Hose Access
 - Tie Down Points
 - Direct to Machinery Fuel Point
-
- OPTIONAL ACCESSORIES
 - 16' Tandem Trailer
 - 110V Fuel Pump
 - 12V Fuel Pump & Solar Panel



TIGER INDUSTRIAL RENTALS

125 KVA PORTABLE GENERATOR

SPECIFICATIONS

- L x W x H - 12' x 6' x 8'
- Standby Output - 132 KW
- Prime Output - 120 KW
- Weight - 6,900 LBS
- Fuel Cap - 214 GAL
- Run Time - 21 HRS

OPTIONAL ACCESSORIES

- 12 X 12 Containment Berm
- 50' Ext. Cord
- Aux. Fuel Tank
- Dist. Box 100 Amp.



AMP DRAW

- 1PH 120V - 277 AMPS
- 1PH 240V - 139 AMPS
- 3PH 240V - 300 AMPS
- 3PH 480V - 150 AMPS

FUEL CONSUMPTION

- Full Load - 7.3 GPH
- ¾ Load - 5.7 GPH
- ½ Load - 4.0 GPH

150 KVA PORTABLE GENERATOR

SPECIFICATIONS

- L x W x H - 12' x 6' x 8'
- Standby Output - 132 KW
- Prime Output - 120 KW
- Weight - 6,900 LBS
- Fuel Cap - 214 GAL
- Run Time - 21 HRS

OPTIONAL ACCESSORIES

- 12 X 12 Containment Berm
- 50' Ext. Cord
- Aux. Fuel Tank
- Dist. Box 100 Amp.



AMP DRAW

- 1PH 120V - 333 AMPS
- 1PH 240V - 166 AMPS
- 3PH 240V - 361 AMPS
- 3PH 480V - 180 AMPS

FUEL CONSUMPTION

- Full Load - 8.6 GPH
- ¾ Load - 6.5 GPH
- ½ Load - 4.7 GPH

S60 JLG MAN LIFT

SPECIFICATIONS

POWER SOURCE

- Auxiliary Power 12 Volts DC
- Capacity - Fuel Tank 40 gal. / 151.42 L
- Engine Type - Diesel DEUTZ TD 2.9L Tier 4 Final 67 hp
- Engine Type - Dual Fuel GM Vortec 3000 MPR 82 hp

PERFORMANCE

- Platform Capacity - Restricted 1000 lb / 453.59 kg
- Platform Capacity - Unrestricted 500 lb / 226.80 kg
- Swing 360 Degrees

DIMENSIONAL DATA

- Machine Height 8 ft 5 in. / 2.56 m
- Machine Length 28 ft 5 in. / 8.65 m
- Machine Width 8 ft 2 in. / 2.49 m
- Platform Dimension A 3 ft / 0.91 m
- Platform Dimension B 8 ft / 2.44 m
- Platform Height 60 ft 3 in. / 18.36 m

REACH SPECIFICATIONS

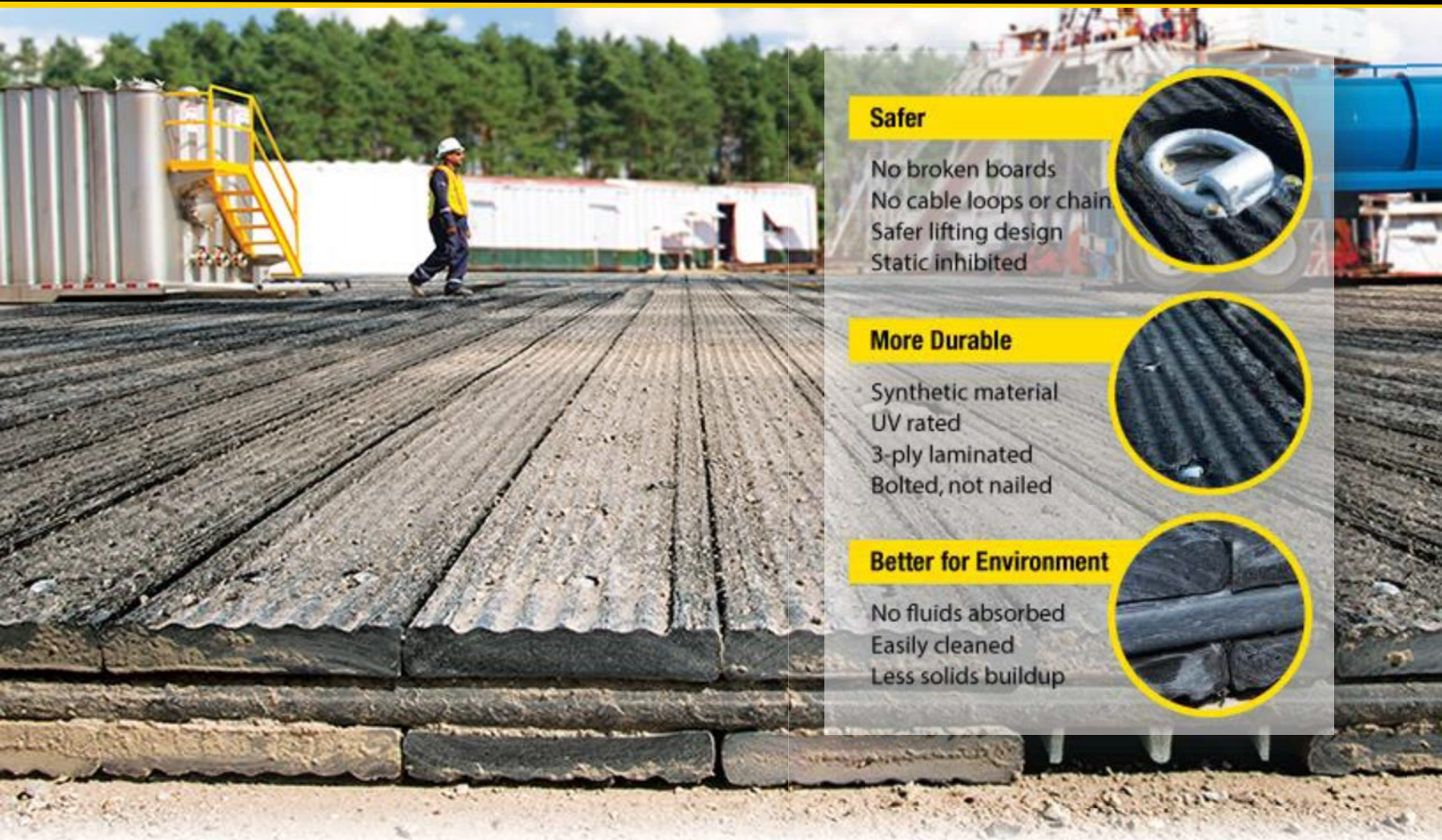
- Horizontal Jib Rotation 0 Degrees
- Horizontal Outreach 49 ft 6 in. / 15.09 m
- Platform Height 60 ft 3 in. / 18.36 m



July 5, 2017 | 14

TIGER INDUSTRIAL RENTALS

24 hour dispatch 1-888-866-0047 | International 001-409-832-9336 | www.TigerIndustrialRentals.com
LOCATIONS: BEAUMONT, TX | SULPHUR, LA | LAPORTE, TX | VICTORIA, TX | DILLEY, TX | MIDLAND, TX | ARDMORE, OK



Safer

- No broken boards
- No cable loops or chain
- Safer lifting design
- Static inhibited



More Durable

- Synthetic material
- UV rated
- 3-ply laminated
- Bolted, not nailed



Better for Environment

- No fluids absorbed
- Easily cleaned
- Less solids buildup



THE SAFER, TOUGHER ECOMAT™. THAT'S THE MARK OF TIGER.

TIGER 8' X 16' ECOMATS™

SPECIFICATIONS

- Weight – 3,000 LBS
- Class II Flame Fire Spread Rated
- UV Inhibitors
- Galvanized 3 Channel Runners
- ECOMats are Lighter than Oak which Increases Freight Savings
- Not Labor Intensive - No Bolting to Layer & Attach
- Loads, Off Loads, Lays and Moves Easily with a Fork Truck or D Rings for Easy Lifting
- 3 Ply - 8' x 16', (128 Sq. Ft. Coverage)
- No Nails - All Bolted
- Anti-Static Inhibitors
- Proprietary Traction Grain Pattern
- No Liquid Absorption - Easily Washed



July 5, 2017 | 15

TIGER INDUSTRIAL RENTALS

24 hour dispatch 1-888-866-0047 | International 001-409-832-9336 | www.TigerIndustrialRentals.com
LOCATIONS: BEAUMONT, TX | SULPHUR, LA | LAPORTE, TX | VICTORIA, TX | DILLEY, TX | MIDLAND, TX | ARDMORE, OK

CORRUGATED WALL/ ROUND BOTTOM LIQUID FRAC TANKS WITH GUN LINE

Dragon Corrugated Wall, Round Bottom Liquid Frac Tanks come equipped with new running gear and 10 mil DFT chemical resistant liners. All frac tanks are steel grit blasted and painted to your specs. Dragon Frac Tanks are built from new 1/4" Heavy Duty Corrugated Steel.

SPECIFICATIONS

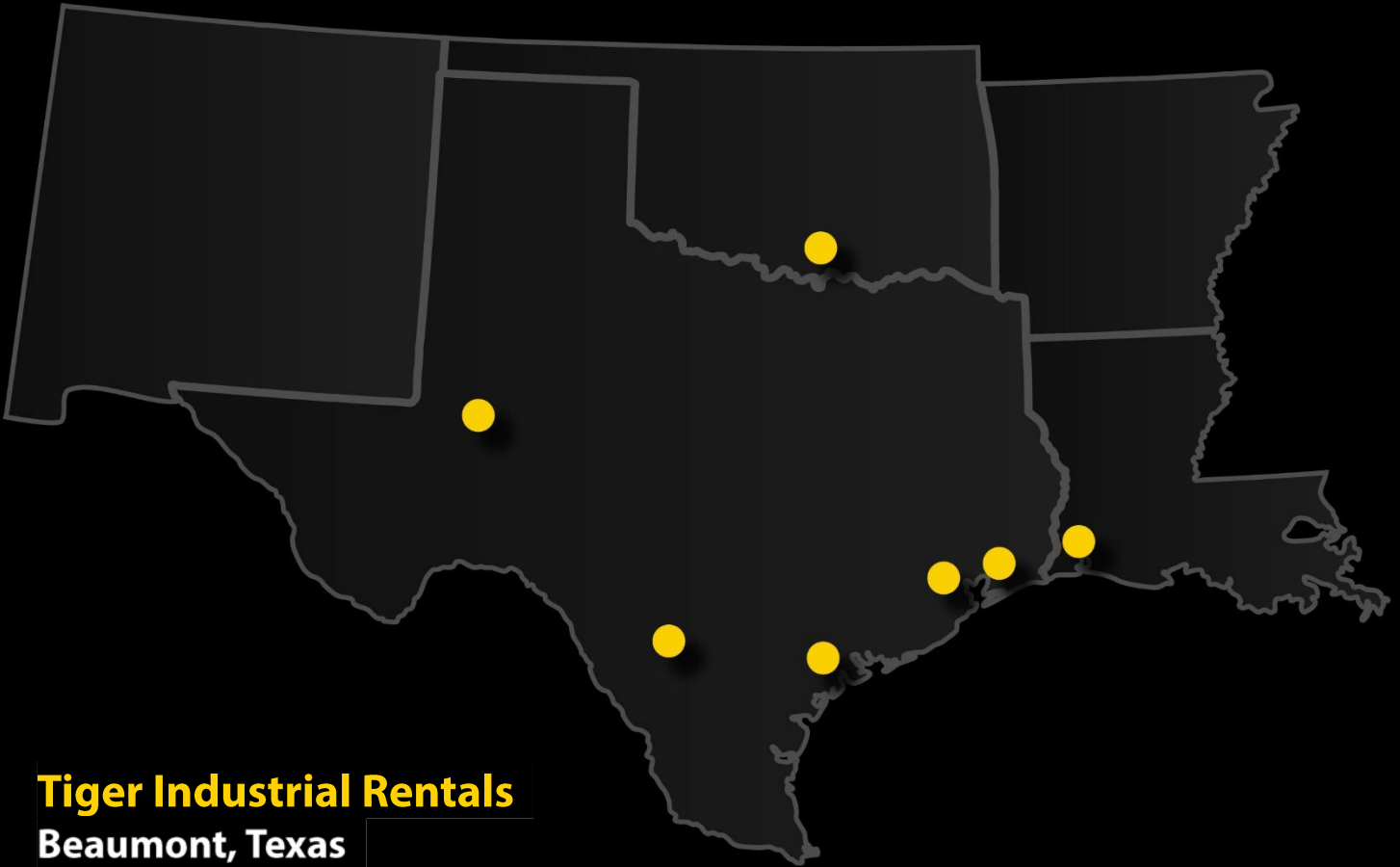
- Floor - 1/4" PL, Round-bottom floor for better drainage
- Floor Support - 10" channel longitudinal runners with 8" channel and formed 1/4" PL channel cross members
- Walls - 1/4" PL solid welded, corrugated steel, corrugations 15" on center
- Roof - Flat top, 1/4" PL solid welded with channel supports outside
- Front/Rear - 1/4" PL solid welded, corrugated steel, 10" radius at vertical outside corners
- Drain/Fill - 4" floor drain at rear end, 3" fill pipe to roof at rear, 4" suction line connection at front, 4" mid high connection at front, 8" flanged front manifold connection with turn down to floor sump
- Manway - 21" manway on front, side, (3) non-sealed hatches on roof
- Pick Up - Standard 5th wheel king pin
- Welds - All welds continuous except substructure crossmembers
- Axle - 25,000 lb. axle with air brakes, 11.00 x 22.5 bias tires on steel disc wheels
- Access - Front stairway
- Finish - Per customer specifications
- Hydrotesting - Full capacity static test
- Dimensions - 45' long, 8'-6" wide, 10' high; 500 barrel capacity
- Tank pressure/ vacuum relief vent
- Level gauging
- Options - Special tank linings, special sizes, open top design, fixed or removable steam coils, 8" exterior manifold assembly



TIGER INDUSTRIAL RENTALS

24 hour dispatch 1-888-866-0047 | International 001-409-832-9336 | www.TigerIndustrialRentals.com
LOCATIONS: BEAUMONT, TX | SULPHUR, LA | LAPORTE, TX | VICTORIA, TX | DILLEY, TX | MIDLAND, TX | ARDMORE, OK

TIGER INDUSTRIAL LOCATIONS



Tiger Industrial Rentals

Beaumont, Texas

1313 GULF STREET • BEAUMONT, TX 77701
TEL: 1-409-832-9336

Dilley, Texas

13400 S. INTERSTATE 35 • DILLEY, TX 78017

LaPorte, Texas

12803 HIGHWAY 225 • LA PORTE, TX 77571

Midland, Texas

7701 WEST INDUSTRIAL • MIDLAND, TX 79706

Victoria, Texas

11901 US HIGHWAY 59 • N. VICTORIA, TX 77905

Sulphur, Louisiana

3334 CARBIDE DR • SULPHUR LA 70665

Springer, Oklahoma

10834 STATE HIGHWAY 53 • SPRINGER, OK 73458



24/7 DISPATCH: 1-888-866-0047

www.TigerIndustrialRentals.com

Make it happen.